



Grey exposed aggregate patio with stairs coming down the side of the house from the back door of the garage.



Brown exposed aggregate with stamped borders.



Crew hard at work.

Different Concrete Finishes



Broomed finish with colour added to concrete.



Exposed aggregate.



Stamped concrete.

Services Provided

- Basement floors
- Garage floors and pads
- Sidewalks
- Driveways
- Patios
- Slabs and shops up to 10,000 sq. feet
- Concrete stairs
- Exposed aggregate
- Stamped concrete
- Custom concrete jobs
- Grade beams
- Pilings
- Concrete pumping
- Concrete removal and replacement



Visit our website for a **FREE** online estimate!

HUNTER CONCRETE

Quality Concrete Contracting



Ph: 780-298-1886

Fax: 780-560-2680

Email: matt@hunterconcrete.ca

Website: www.hunterconcrete.ca

WWW.HUNTERCONCRETE.CA

We Know Concrete

About Us

Hunter Concrete is Edmonton and surrounding areas' most reliable concrete contractor dedicated to excellence in the field of concrete flatwork. Our extensive experience with many leading home builders means we finish the job the right way, on time, every time.

We offer all services in the field of concrete prep work, placement, removal and finishing of concrete flat work. This includes a full range of concrete stamps, patterns and decorative concrete products for both interior and exterior use.

Whatever your concrete needs, let the experts at Hunter Concrete help you design and achieve your concrete project today.



Over 30 years of experience in concrete flat work and decorative concrete.



Custom stairs.



Brown exposed aggregate with stamped borders.



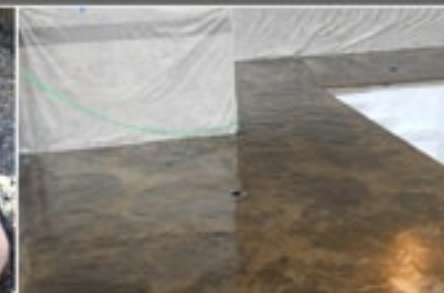
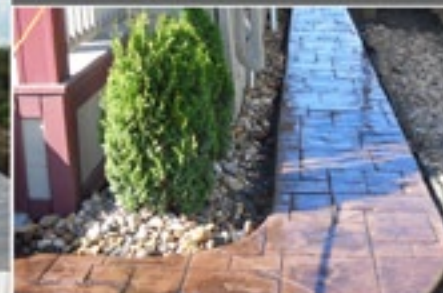
Broom finished driveway with stamped borders.

What is stamped concrete?

Stamped concrete involves pouring slab concrete for driveways, walkways, patio's etc., and then impressing both pattern and textures onto the concrete before it is fully dry. Pigment is added to the mix in order to further duplicate the look of the desired pattern.

Why stamped concrete instead of the original surface?

Brick, pavers and cobbles look great, but since they form a surface of many interlocking pieces, they are susceptible to frost-heave and other changes in the underlying surface. Reinforcing steel within the stamped concrete helps to tie the concrete together and strengthen it. Also, bricks, pavers, cobbles etc., allow for weeds to grow up through the cracks. Since stamped concrete is a solid, continuous surface, nothing can grow up through the "cracks". As you may already know, the cracks in stamped concrete are simply decorative impressions that only go partially through the surface.



Various stamped concrete projects.



Brown exposed aggregate with stamped borders.



Standard grey exposed aggregate.